

Tubular Handles

Stainless Steel, Mounting from Operator's Side

SPECIFICATION

Types

- Type **K**: With plastic cover
- Type **E**: With stainless steel cover cap

Handle tube

Stainless steel AISI 304, wall thickness 1,5 mm
Matte shiny finish, ground

Handle legs

Stainless steel AISI 304
Matte shiny finish, ground

Covers

- Plastic, thermoplastic elastomer (TPE)
Black, matte finish for type K
- Stainless steel AISI 304 for type E

Fastening set

- Stainless steel AISI 304
- Mounting stud with threaded pin DIN 913-M8
 - Grub screw DIN 914-M5



INFORMATION

For a mounting of tubular handles GN 666.7 (mounting from operator's side) the stud is first screwed in from the machine side with the threaded pin DIN 913-M8x25 (included) and then the handle is pushed on and secured with the grub screw DIN 914-M5.

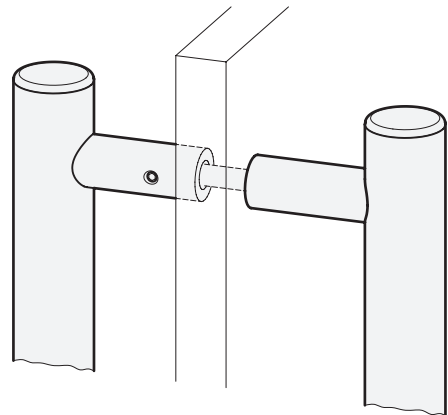
Type E of tubular handles GN 666.7 is completely made of A2 stainless steel.

ON REQUEST

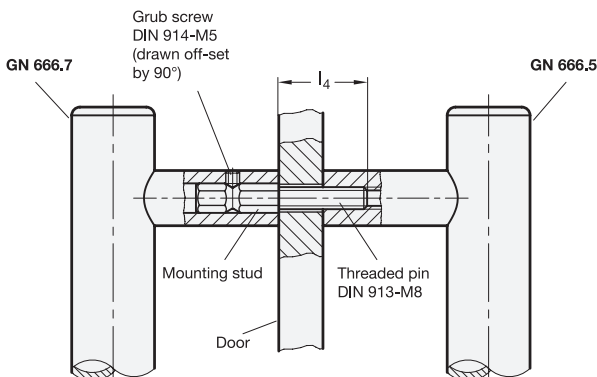
- Special lengths

TECHNICAL INFORMATION

- Example of application (see page)
- Load Rating Information (see page A35)
- Plastic Characteristics (see page A2)
- Stainless Steel Characteristics (see page A26)

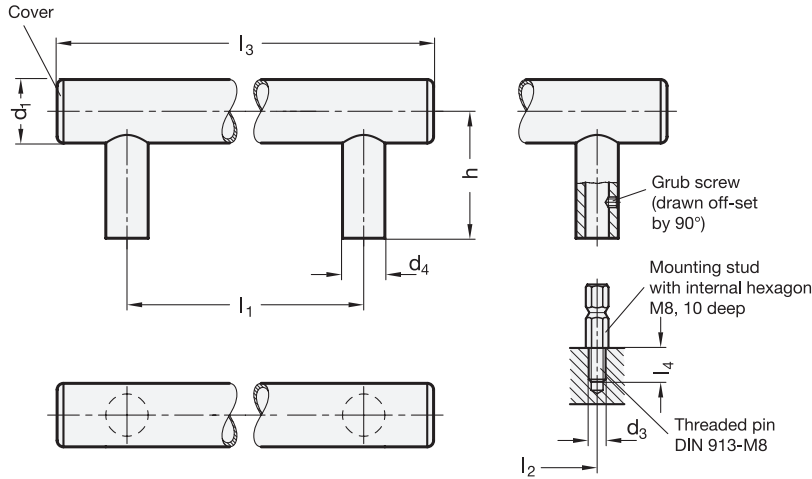


Example of application



Tubular handles GN 666.7 allow the mounting of a pair of handles in opposite position. This method could be used on doors (double handle).

Generally a modification of the thread length l_4 is required for this. The included threaded pin DIN 913-M8x25-A2 of the mounting stud needs to be replaced by longer threaded pin, too. Handles with a modified thread length l_4 are available on request.



GN 666.7-K

STAINLESS STEEL

Description	d1	d3	l1 ±0.5	l2 ±0.3 Threaded bore for mounting stud	d4	h	l3	l4	⚖
GN 666.7-30-M8-200-K	30	M 8	200	200	20	60	265	15	520
GN 666.7-30-M8-250-K	30	M 8	250	250	20	60	315	15	550
GN 666.7-30-M8-300-K	30	M 8	300	300	20	60	365	15	580
GN 666.7-30-M8-400-K	30	M 8	400	400	20	60	465	15	740
GN 666.7-30-M8-500-K	30	M 8	500	500	20	60	565	15	800
GN 666.7-30-M8-600-K	30	M 8	600	600	20	60	665	15	860

GN 666.7-E

STAINLESS STEEL

Description	d1	d3	l1 ±0.5	l2 ±0.3 Threaded bore for mounting stud	d4	h	l3	l4	⚖
GN 666.7-30-M8-200-E	30	M 8	200	200	20	60	265	15	581
GN 666.7-30-M8-250-E	30	M 8	250	250	20	60	315	15	640
GN 666.7-30-M8-300-E	30	M 8	300	300	20	60	365	15	690
GN 666.7-30-M8-400-E	30	M 8	400	400	20	60	465	15	796
GN 666.7-30-M8-500-E	30	M 8	500	500	20	60	565	15	900
GN 666.7-30-M8-600-E	30	M 8	600	600	20	60	665	15	990

